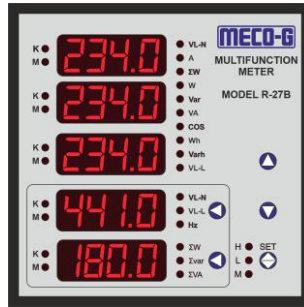
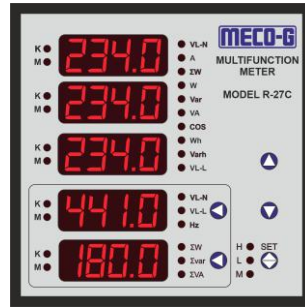


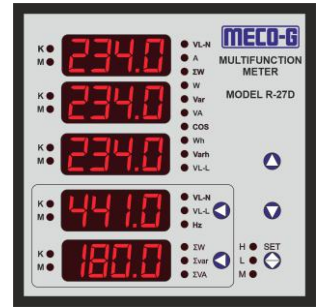
R-27A



R-27B



R-27C



R-27D

R-27 series multifunction network instruments can measure more than 50 electrical parameters in the electrical circuit. All measurements are in T-RMS

It has 2-channel electrical energy pulse outputs, 4-channel switching value inputs and RS 485 communication output with modbus protocol. 4 channel switching value outputs or 4 channel transmitting outputs are also available.

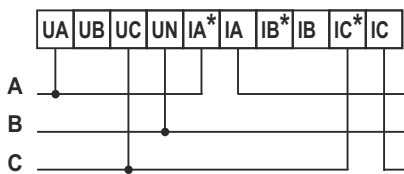
MEASURING PARAMETERS:

- Phase - Neutral Voltage (VL_N)
- Phase - Phase Voltage (VL_L)
- Phase - Current (A)
- Total Current (ΣA)
- Active Power (W)
- Reactive Power (var)
- Apparent Power (VA)
- Power Factor (Cos ϕ)
- Active Electric Energy (Wh)
- Reactive Electric Energy (varh)
- Average Phase - Neutral Voltage (VL_N)
- Average Phase - Phase Voltage (VL_L)
- Frequency (Hz)
- Total Active Power (ΣW)
- Total Reactive Power (Σvar)
- Total Apparent Power (ΣVA)
- Max. Value (H)
- Min. Value (L)
- Demand Value (M)

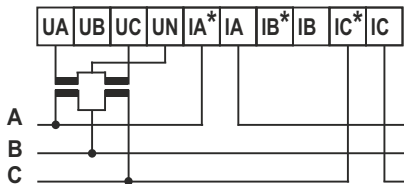
MODEL	Four Channel Transmitting Output	Four Channel Switching Output	Four Channel Switching Value Output	RS-485 Interface	Two Channel Energy Pulse Output	Four Channel Switching Value Input
R-27A	NO	NO	NO	NO	NO	NO
R-27B	NO	NO	NO	YES	YES	YES
R-27C	NO	NO	YES	YES	YES	YES
R-27D	YES	YES	NO	YES	YES	YES

CONNECTION DIAGRAM

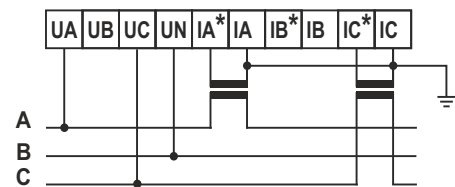
3 Phase 3 Wire



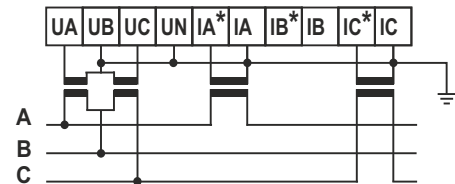
Voltage input without P.T.
Current input without C.T.



Voltage input with P.T.
Current input without C.T.



Voltage input without P.T.
Current input with C.T.

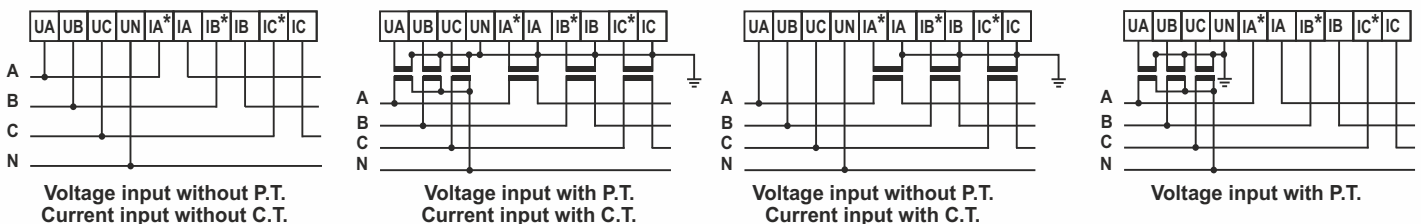


Voltage input with P.T.
Current input with C.T.

INPUT	Network		1Phase, 3 Phase 3 Wire, 3 Phase 4 Wire
	Volts	Rated Value	110VAC / 230VAC / 440VAC
		Over Load	Continuous: 1.2x, Instantaneous: 2x <20seconds
		Consumption	<1VA / Phase.
		Impedance	>500KΩ
	Current	Rated Value	1A / 5AAC
		Over load	Continuous: 1.2x, Instantaneous: 20x <1seconds
Impedance		<20mΩ	
Frequency		45-65Hz	
OUTPUT	Electric	Output Mode	Two channel open-collector optical coupling pulse output
	Energy	Pulse	Active 10000 imp/kwh
		Constant	Reactive 10000 imp/kvarh
		Start	At rated voltage, reference frequency and the load current is More than 0.001 times Input, it can start and measure the Electric energy continuously
	Commu- nication	Output mode	RS 485 MODBUS Protocol, RTU
		Baud Rate	1200, 2400, 4800, 9600
	Analog	Channels	Four Channels
	Output	Output Mode	0-20mA, 4-20mA, Programmable
		Load Ability	<400W
	Switching	Channels	Four Channels
	Value	Output Mode	Normally open relay contact output
		Load Ability	AC 240 V /1A
	Switching Value Input		Four dry contact input modes
DISPLAY			7 SEGMENT BRIGHT RED LED DISPLAY, FIVE ROWS
ACCURACY	Voltage, Current		±(0.5%FS + 2dgts)
	Watts, Var, KVA		±(0.5%FS + 2dgts)
	Frequency		± 0.1 Hz
	Power Factor		± 0.01 PF
	Active Energy		± 0.5%
	Reactive Energy		± 2.0%
SUPPLY	Auxillary Supply		AC/DC 85~264 V, <5VA
SAFETY	AC Breakdown		Bet.Input or Output and Supply : 2KV 50Hz /1 min.
	Voltage		Bet .Input & Output :1KV 50Hz /1 min.
	Insulation Resistance		Bet.Input / Output / Supply and casing: 20MW@500V DC.
OPERATING CONDITION	Temperature		Operating : -10° ~ 50° C
			Storage: -25° ~ 70° C
	Humidity		< 85% RH, free of moisture and gas

CONNECTION DIAGRAM

3 Phase 4 Wire



Note: A=R phase , B=Y phase , C=B phase , N= Neutral